



Winter
Gardenz™

QUALITY NEW ZEALAND MADE
12ft GREENHOUSE SERIES



ENGINEERED FOR
AUSTRALIA
CONDITIONS

25
YEARS
WARRANTY

NZ
MADE
GREENHOUSES


NO PANEL
BLOWOUTS


RESISTANT
QUALITY MATERIALS


150K/HR
WIND RATING

FEATURES AND BENEFITS



All 12ft Greenhouses are supplied fully optioned and include the following:

- ✓ Double-hinged lockable doors
- ✓ Glazed with 4mm toughened safety glass
- ✓ Temperature controlled roof vent openers
- ✓ Gutter system for rain catchment
- ✓ 25-year warranty

Optional Extras:

- ✓ Additional doors at end or along side walls.
- ✓ Tinted Glass
- ✓ Powdercoat colour options
- ✓ Construction/assembly

SUPERIOR DESIGN & CONSTRUCTION

The unique design delivers superior strength and durability, with minimal maintenance required.

LOUVRE VENTS

Side-louvre vents allow additional airflow, letting cooler air in at the floor level and the warmer air out at the top of the greenhouse.

OPENING VENTS

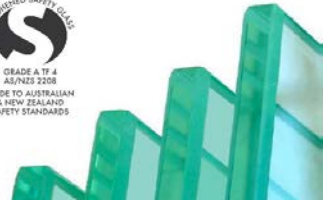
Temperature controlled vents open and close automatically to assist in maintaining the optimum temperature.

STEEL SUBSTRUCTURE

Made out of structurally engineered steel and built to last! Z450 galvanized, cold-rolled seam-welded steel that is commercially graded. Manufactured from strong grade (310 mpa) steel with proven high-load strength.

DURABLE

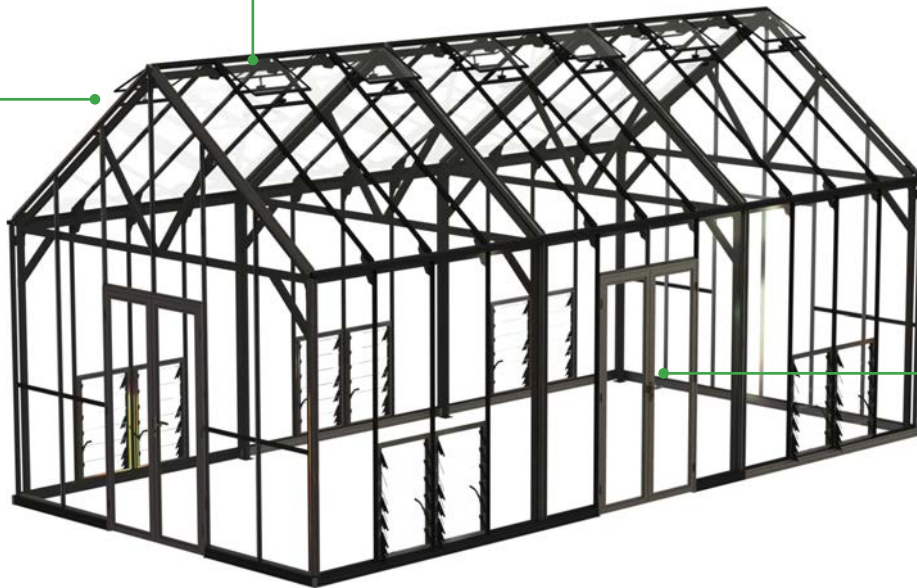
Long lasting, powder coated finish in black with Dulux Powder coat. Looks great and requires minimal maintenance. Covered by Dulux non-fade warranty. 6061 Grade Aluminum extruded in New Zealand with T6 temper for commercial application.



SAFETY GLASS

4mm Toughened

Glass provides superior clarity and longevity and is now significantly stronger. Made to NZ safety standards, this glass can take almost anything you can throw at it. Includes 25yr glazing warranty. Tinted glass option is also available



SIDE ENTRY DOORS

Options for door placement on any of the 4 walls of the greenhouse. Additional doors after the first set are at an additional cost. Hinged, double opening doors with quality door handles and locks.

Winter Gardenz' stunning new 12ft series is the largest in the residential greenhouse range, standing at nearly 4m tall (2.4m to the eave) and offering a spacious 3.8m width over a range of lengths. The 12ft series offers a significant step up from the 8ft/10ft Elite range, both in terms of height and interior living space.

Built to Winter Gardenz **exacting standards**, the 12ft series is constructed **from durable, quality materials**. The aluminium and glass structure is supported by a **galvanised steel substructure**, and all structural components are

powder-coated with a quality Dulux finish, to provide a **low maintenance** and **easy-clean surface** for years to come.

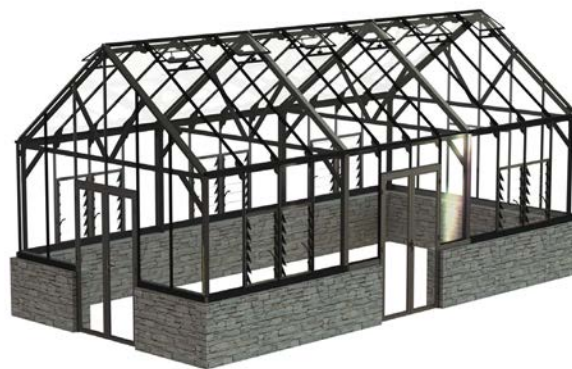
The 12ft series comes with one set of **double-hinged lockable doors** as standard, and both roof and louvre vents to **provide adequate ventilation**. Additional doors, vents, and shelving can also be added if required.

The 12ft series is a **durable and elegant structure** that will stand the test of time.

PRICING GUIDE



STANDARD FULL PANEL



ELITE STYLE WITH BRICK OR STONE BASE

Size (ft)	Size (m)	Size in mm	Model #	Roof vents included	Side wall louvres included	Base Price (Inc GST)
12X16	3.8x5.1	3844mm (W) X 5138mm (L)	#UG1216	8	8	\$39,995
12X20	3.8x6.4	3844mm (W) X 6386mm (L)	#UG1220	10	10	\$47,995
12X24	3.8x7.7	3844mm (W) X 7680mm (L)	#UG1224	12	12	\$54,995
12X30	3.8x9.6	3844mm (W) X 9552mm (L)	#UG1230	12	12	\$69,995
12X40	3.8x12.7	3844mm (W) X 12718mm (L)	#UG1240	16	16	\$84,995
12X50	3.8x15.9	3844mm (W) X 15884mm (L)	#UG1250	20	20	\$99,995

*Further customization and accessories available. Base price includes 1 set of doors, clear roof panels, 6-blade side wall louvres, and autovent openers for each roof vent. Price based on clear access to site, otherwise additional charges may apply for site access. Vent and louvre quantities are indicative only, as they change depending on door configuration. Build cost not included.

Accessory Options	Accessory Price	Accessory Options	Accessory Price
Extra set of hinged doors on any 4 walls	\$1,800	Tinted Roof Panels	\$1,200
Additional 1/3 (6-blade) louvre	\$295	Foundation Work	*POA, depends on system
Additional full wall (15-blade) louvre	\$495	Climate Control Systems	*POA, depends on system

*Custom sizes also available. Typical foundation plan is provided with each kitset. Customer is responsible for all foundation work. Brick wall shown is for illustration purposes only, it is not included in the kitset. Prices are inclusive of GST. Prices are subject to change. Council compliance and suitability of use is the purchasers responsibility. Foundations, brick/block/stone wall for the Elite models are excluded, however detailed plans are provided.

ACCESSORIES AND DETAIL VIEWS



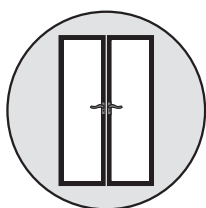
The **architectural series** is **customizable within a modular** system. From **extra ventilation** to **shading** or **extra doors**, we can help you achieve the greenhouse design you are after to give you **maximum control** of the climate inside your greenhouse.

The **added space and height** in an architectural glasshouse allows for having both a protected outdoor entertaining space as well as greenhouse growing with all the climate controls to keep your plants happy and thriving.

With a **tinted roof** and ventilation, you can still enjoy a meal in the greenhouse on a warm day with the extra protection from the harsh sun.

Electric mechanical arms give you the added climate control that allows you to **fine-tune the climate** inside your greenhouse.

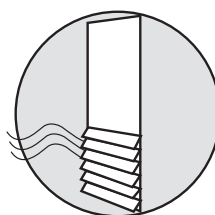
Airflow can be increased by adding fans which aid the vents and louvres in circulating air through the greenhouse, aiding in **pollination** and **keeping out pests**.



SIDE ENTRY DOORS

Options for door placement on any of the 4 walls of the greenhouse. Additional doors after the first set are at an additional cost.

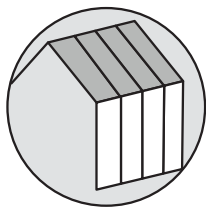
The architectural series comes with hinged, double opening doors with quality door handles and locks.



LOUVRE VENTS

Side-louvre vents allow additional airflow, letting cooler air in at the floor level and the warmer air out at the top of the greenhouse.

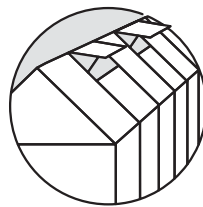
The louvre vents are 1/3 of the panel, with 6 louvre-blades. The greenhouse comes with 2 louvres per 8ft section (except where doors are located). Additional louvres can be added in place of full panels.



TINTED ROOF PANELS

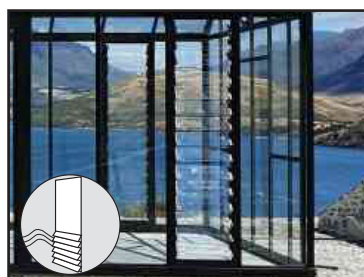
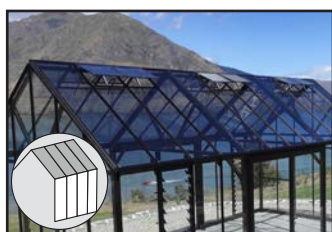
Tinted roof panels help prevent plant-scorching in the summer months. They also help keep it cooler when you are using it as an outdoor entertaining area. It's a light enough tint that it isn't too visible, but enough to cool

the temperature by a few degrees. Tinted panels are a great feature if you are using your greenhouse during the hottest months of the year, for either growing or entertaining.

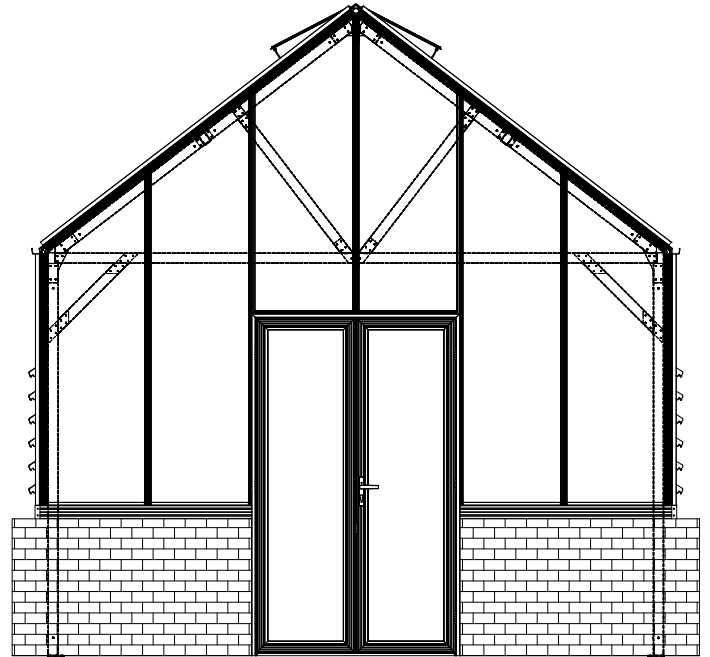
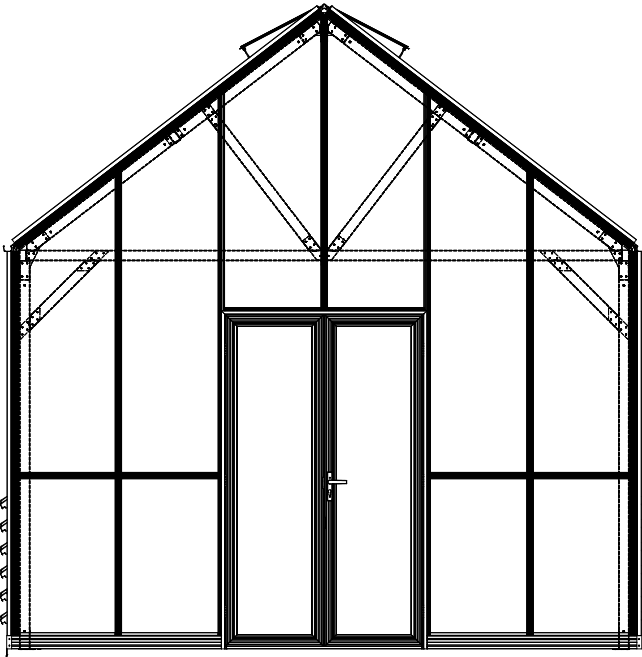


CLIMATE CONTROL

We can also help you customize your greenhouse with climate-control features like electric mechanical arms for the roof vents, which are more controllable/accurate than the autovent openers. The electric vent openers come with a control box. Other climate control features we offer include shade covers and various fans.



FULL PANEL VS ELITE STYLE



We offer both full-panel and Elite, or brick base-style greenhouses in our Architectural as well as standard ranges. In the Architectural range, both of these options are the same height of 3.9m at the roof line.

The nib wall, for the Elite style greenhouse, needs to be built by a qualified bricklayer of the clients' choice. It can also be constructed of concrete or timber. The nib wall needs to be 820mm tall, and at least 100mm wide, which if brick is being used, would be 2 bricks wide and about 140mm.

Winter Gardenz Warranty

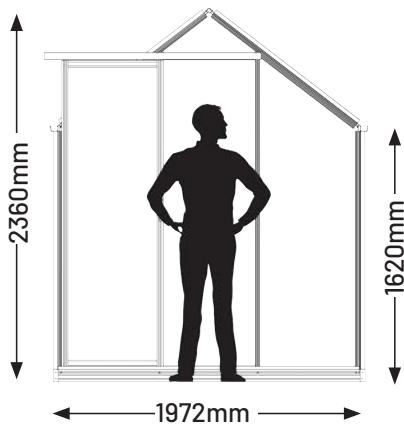
1. Our liability for Goods manufactured by us is limited to making good any defects by repairing the defects or at our option by replacement, within a period not exceeding 12-months after the Goods have been dispatched, provided;
 - a. defects have arisen solely from faulty workmanship or materials;
 - b. the Goods have not received modification, maltreatment, inattention or interference;
 - c. the defective Goods are promptly returned free of cost to us.
2. We are not liable for you and you release us from any claims in respect of faulty or defective design or specification of any Goods.
3. Except as provided in these conditions, all express and implied warranties, guarantees and conditions under statute or general law as to merchantability, description, quality, suitability or fitness of the Goods for any purpose or as to design, assembly, installation, materials or workmanship or otherwise are expressly excluded. We shall not otherwise be subject to or be liable for any loss, damage or costs whatsoever or wherever arising out of the supply, layout, assembly, installation or operation of the Goods or arising out of our negligence.

4. We make no representation or warranty to you, other than those imposed by law.
5. It is expressly acknowledged by you that we have no way of knowing the purpose intended by you for the purchased goods.
6. You expressly acknowledge that any representations made by us, either in writing or orally were not relied upon by you in your decision to purchase and use the goods.
7. Except as otherwise provided by statute, we shall not be liable for:
 - a. any consequential loss or damage of any kind including financial loss;
 - b. for any loss, damage or injury beyond the value of the Goods provided by us to you in contract, or in tort, or otherwise, and
 - c. for any costs or loss arising from delays.

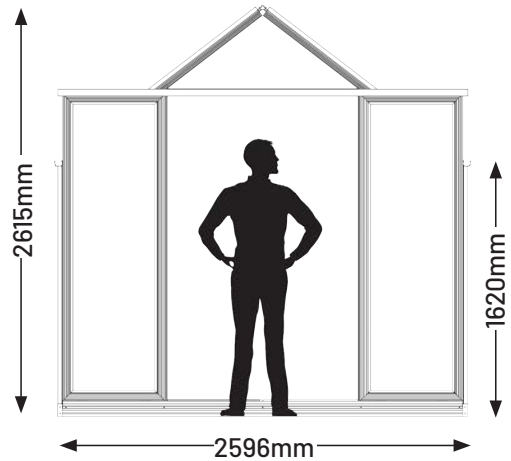
Our Greenhouses are warranted as follows:

Architectural Builds - 10 year warranty for Structure, Glazing and Paint. 12 months workmanship liability on installation. Note- Winter Gardenz greenhouses are designed for the purpose of horticultural uses and are not designed to achieve complete weather tight. Weather tightness is not guaranteed by us or covered under warranty of workmanship.

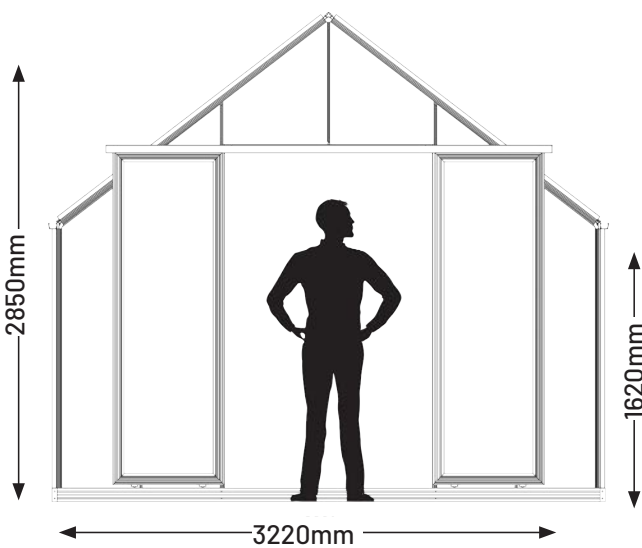
RESIDENTIAL KITSET VS ARCHITECTURAL SERIES



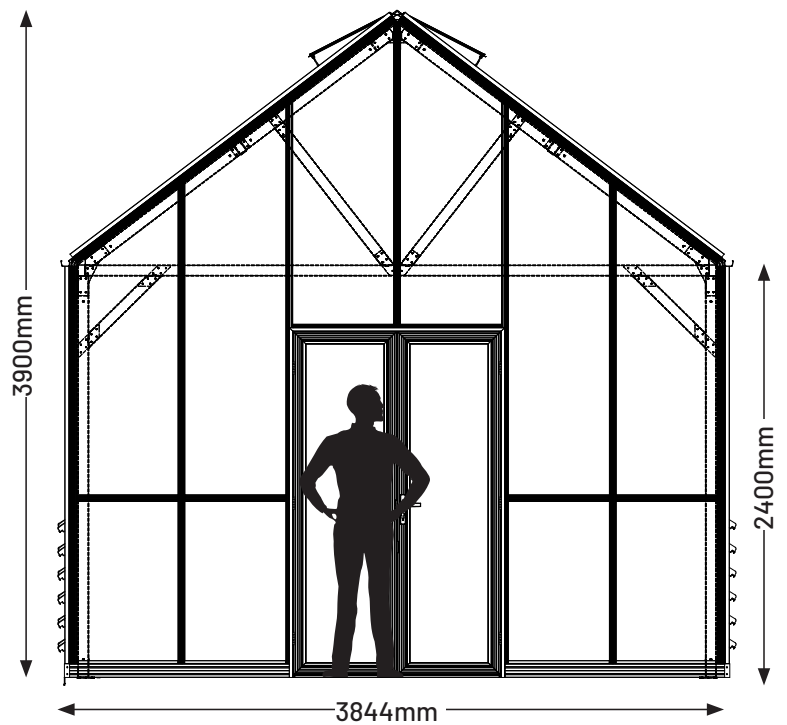
6FT SERIES



8FT SERIES



10FT SERIES



12FT ARCHITECTURAL SERIES

RESIDENTIAL KITSET VS ARCHITECTURAL SERIES



There are several key differences between our **Residential kitset greenhouses** and our **Architectural series greenhouses**. The opposite page gives a visual reference to the dimensions from the front view of the different greenhouse series.

Our **6, 8, and 10ft wide** models fall under our **Residential/ kitset series**. We send these out as a flat pack that can be assembled by the customer or their builder. Our tallest kitset model is 10ft/3.2m wide, 5.2ft/1.6m tall at the eaves or sides and 8.5ft/2.6m tall at the roof line.

Our **Architectural series** stands much taller, with an eave height of 2.4m and a roof height of 3.9m. This increased height in our Architectural series allows for the placement of **doors on the sides**, whereas the kitset sizes do not allow for side-wall door placement.

The increased height also allows a **significantly larger internal air volume**, which assists with **maintaining a stable climate** and helps plants grow.

The Architectural series also has a stonger structural system with the **additional duragel steel substructure**. This also adds capacity to hand plants and lights inside along the cross supports.

The Architectural as well as Elite kitset ranges also have more robust doors than our standard range sliding doors. They are **hinged, lockable doors** versus the sliding doors provided in our standard kitset models.

Other upgraded features of the Architectural series include a higher grade of stainless steel as the main fastener (316s/s rather than 304s/s), highest quality powder coating - Dulux Durtec rather than Dulux Duraloy, as well as a 6-blade louvre system, auto opening roof vents and options for tinted glass.

Due to the larger/more complex structure of our Architectural series greenhouses, these are built on site by our team. The price chart on page 3 gives you an estimate of approximate build costs, but it also depends on where in the country it is located, site access, and other factors hence we give a range in costs.



8FT RESIDENTIAL SERIES



12FT ARCHITECTURAL SERIES

CLIENT PHOTOS

